



# Economical Houses

Geiger International  
Egelsestr. 52b  
Feldkirch 6800  
Austria

Tel: 0043 5522 32201

Fax: 0043 5522 32201-28

Web: [www.geiger-international.com](http://www.geiger-international.com)

E-Mail: [info@geiger-international.com](mailto:info@geiger-international.com)

# Building



- The building system has undergone constant technological advancement and enhancement. Steel- frame houses built 30 years ago are still standing in good condition today.
- The houses are more affordable and faster to erect than conventional site-built houses and makes most building projects more economical viable.
- Fast to build
- Quick & easy to erect
- Reduce time and save labor costs.
- The construction and assembly technique does not require highly skilled construction labor. Trained builder will pick- up the know how
- Wall & Roof panels are fire resistant, water proof and provide excellent sound & thermal insulation.

## Robust and Durable, Wide Range of Choices :



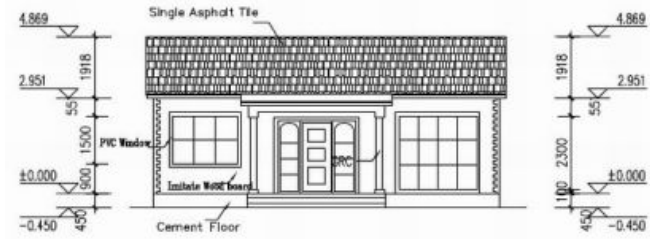
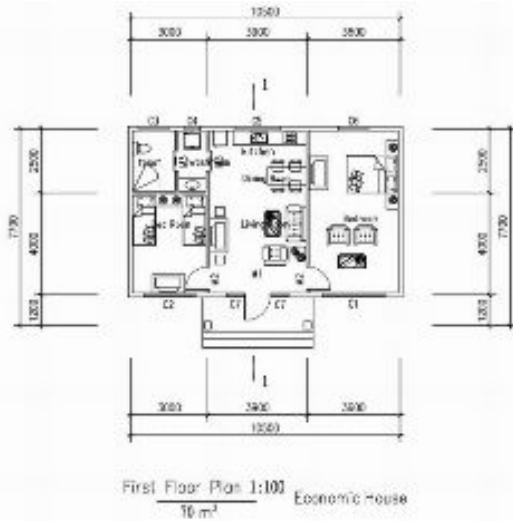
- Anti- corrosion steel-frame surpasses timber in robustness and durability. Designed to withstand winds up 70 m.p.h wind load), earthquake (up to Richter Scale 7) and climate (-20° and above) conditioned for the four seasons.
- We are willing to modify our designs to suit local tastes and preferences. There are wide range of wall & roof panel colors and textures to choose from. Can be mixed & matched to suit the personal taste of each individual house buyer.
- House designs can be adapted and customized or designed and manufactured from scratch to your specification. (\*additional custom design services fees will apply subject to minimum order quantity.)
- Each model comes in 3 versions (1) Economy (locked –door shell), (2) Standard and (3) Luxury. The standard and Luxury versions include optional accessories such as: active ventilation inductor fans furniture, bathroom, toilet, kitchen and light fixtures etc.

## Smart Design and Hi Usability:

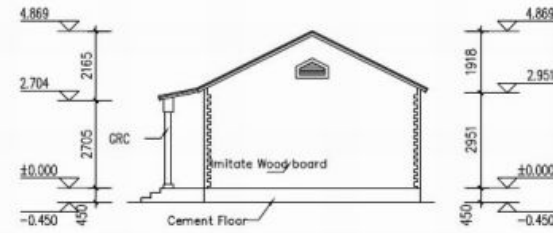


- Completely modular, prefabricated & panellized – limited messy sawing and concrete forming, no hacking or brick laying etc. All necessary parts and components come In the kitset and only require screw, rivet and bolt assembly.
- Kitset arrives with all components packed-flat in shipping container for easy transportation and onsite delivery. This include: steel-frame, wall and roof panels, doors, windows, internal partition and flooring.
- Modular parts and components allow for ease of replacement (e.g. panels are swappable in case of accidental breakage) this modularity also lends itself to easy renewal and rejuvenation without extensive renovation.
- Re-locatable- Can be disassemble transports and re-assembled on another plot of land. Instead of selling your house when your move, you can literally take it with you.
- Modular nature of building system allows for flexibility in subsequently adding to an extending the house

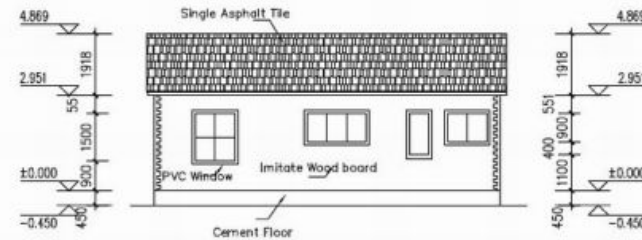
# Economical House 1



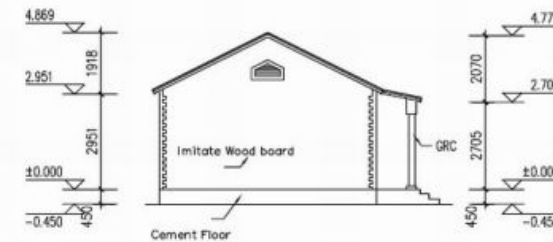
South Side 1:100



East Side 1:100



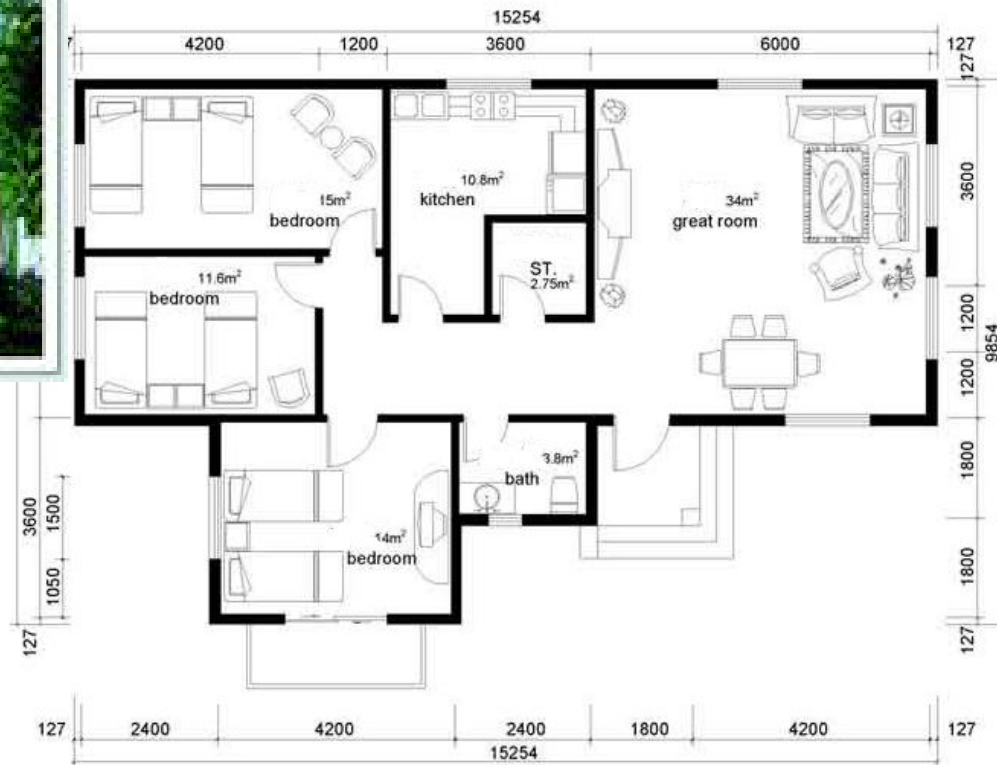
North Side 1:100



West Side 1:100

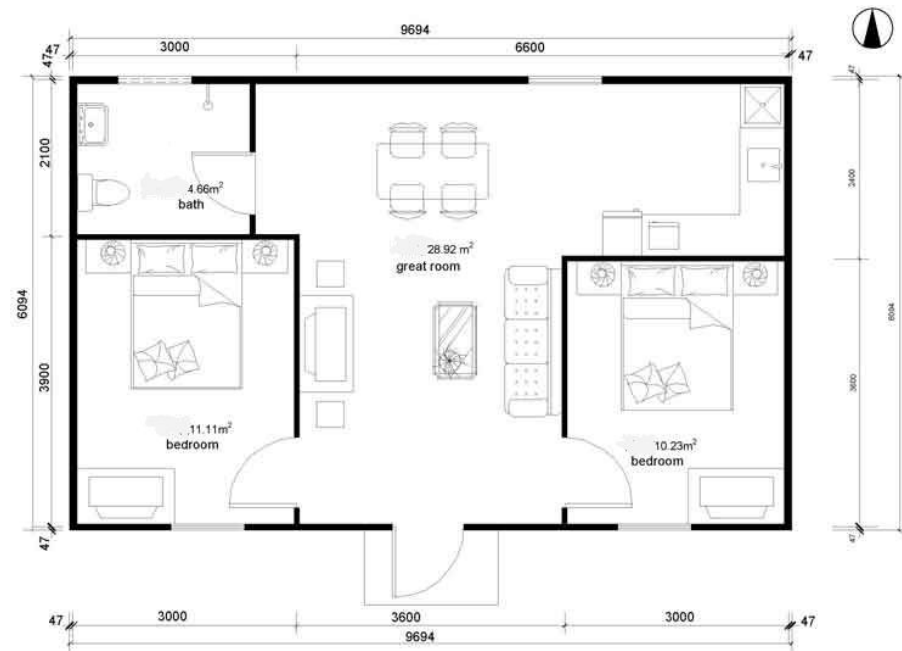


# Economical House 3

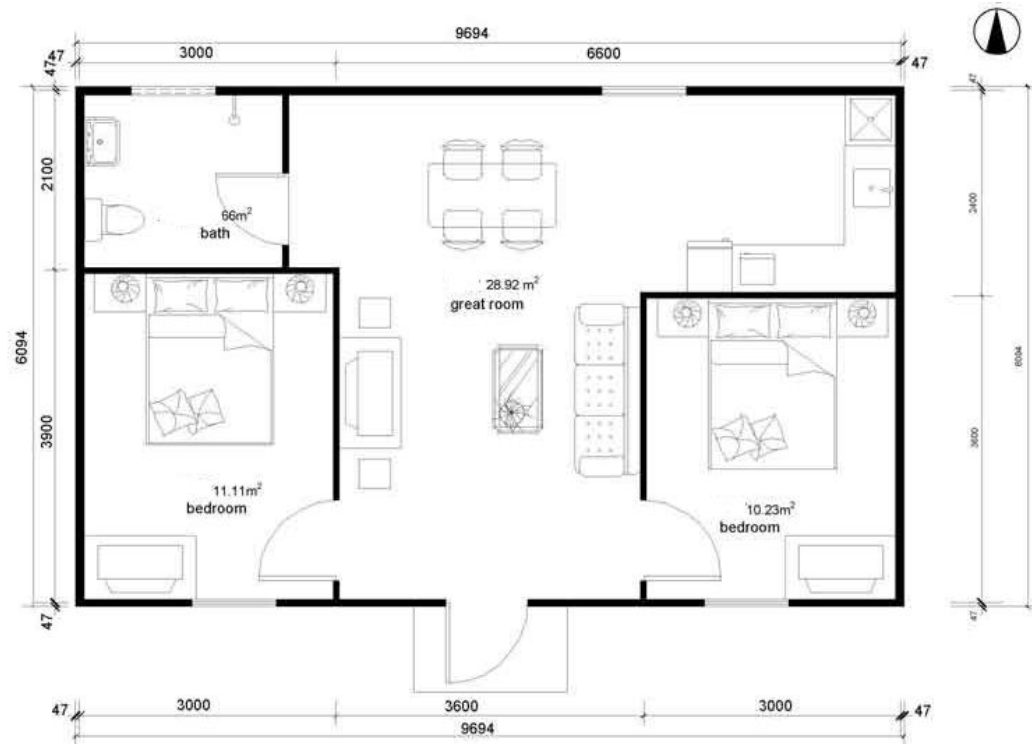


Geiger International

# Economical House 4

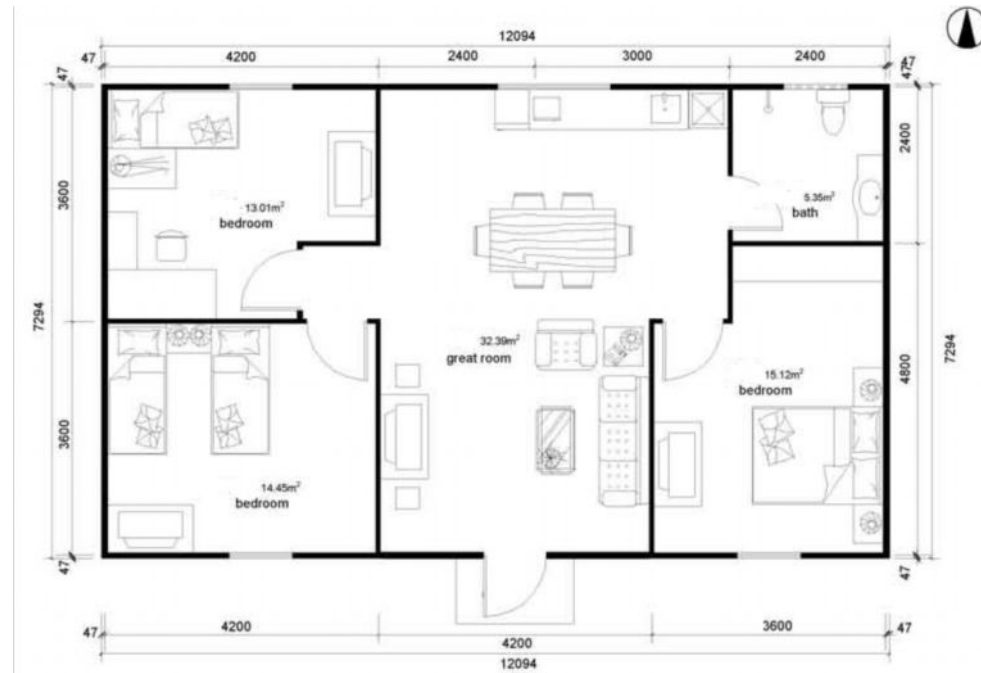


# Economical House 5



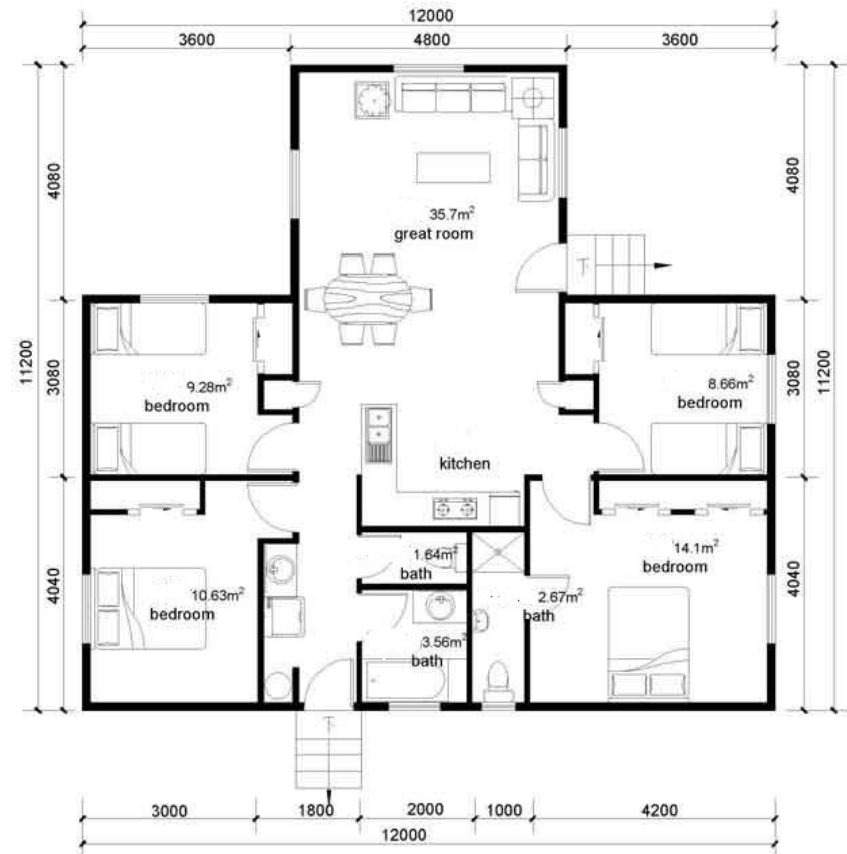
Geiger International

## Economical House 6



Geiger International

## Economical House 7



Geiger International

## Economical House 8



Geiger International