



Prefabricated Houses - Villas

Geiger International

Egelsestr. 52b

Feldkirch 6800

Austria

Tel: 0043 5522 32201

Fax: 0043 5522 32201-28

Web: www.geiger-international.com

E-Mail: info@geiger-international.com

Product information



- The building system has undergone constant technological advancement and enhancement. Steel-frame houses built 30 years ago are still standing in good condition today.
- The houses are more affordable and faster to erect than conventional site-built houses and makes most building projects more economical viable.
- Fast to build
- Quick & easy to erect
- Reduce time and save labor costs.
- The construction and assembly technique does not require highly skilled construction labor. Trained builder will pick- up the know how



Robust & Durable, Wide Range of choices



- Anti- corrosion steel-frame surpasses timber in robustness and durability. Designed to withstand winds up 70 m.p.h wind load), earthquake (up to Richter Scale 7) and climate (-20° and above) conditioned for the four seasons.
- All components come covered by a 20 year material warranty (excluding wear & tear and exterior panel de-coloration due to weathering .)
- We are willing to modify our designs to suit local tastes and preferences. There are wide range of wall & roof panel colors and textures to choose from. Can be mixed & matched to suit the personal taste of each individual house buyer.
- House designs can be adapted and customized or designed and manufactured from scratch to your specification. (*additional custom design services fees will apply subject to minimum order quantity.)
- Each model comes in 3 versions (1) Economy (locked –door shell), (2) Standard and (3) Luxury. The standard and Luxury versions include optional accessories such as : active ventilation inductor fans furniture, bathroom, toilet, kitchen and light fixtures etc

Smart Design & Hi Usability



- Completely modular, prefabricated & panelized – limited messy sawing and concrete forming, no hacking or brick laying etc. All necessary parts and components come in the kitset and only require screw, rivet and bolt assembly.
- Kitset arrives with all components packed-flat in shipping container for easy transportation and onsite delivery. This includes: steel-frame, wall and roof panels, doors, windows, internal partition and flooring.
- Modular parts and components allow for ease of replacement (e.g. panels are swappable in case of accidental breakage) This modularity also lends itself to easy renewal and rejuvenation without extensive renovation.
- Re-locatable- Can be disassembled, transported and re-assembled on another plot of land. Instead of selling your house when you move, you can literally take it with you.
- Modular nature of building system allows for flexibility in subsequently adding to or extending the house

Technical features



- Wall & Roof panels are fire resistant, water proof and provide excellent sound & thermal insulation.

Thermal function

Thickness (mm)	50	80	100	120	150	200
Heat Transmission (w/m ² .k)	0.758	0.560	0.407	0.331	0.278	0.211

Soundproofing

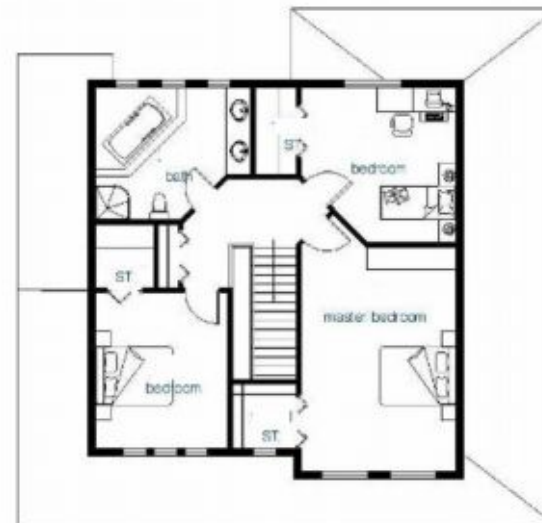
Thickness (mm)	50	80	100	120	150	200
Ave sound vol.(db)	29.67	31.30	32.24	33.09	34.22	35.84

Required foundation is only a concrete slab or deck. The house is simply bolted down on the slab and on pilling is required.

American Style 1



1st Floor : 130m²
2nd Floor: 98m²
Total: 228m²



Villa American European Style 4



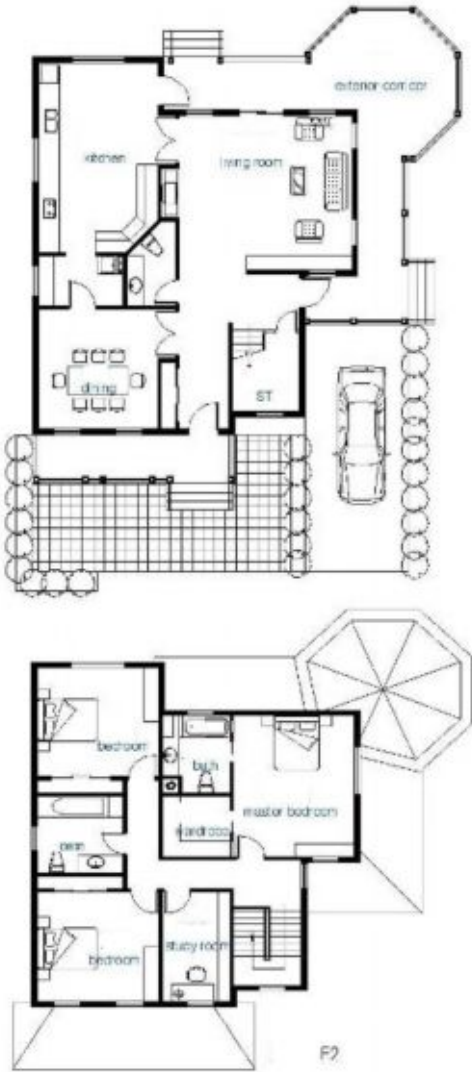
1st Floor: 143m²
2nd Floor: 123m²
Total: 266m²



Villa American European Style 6



1st Floor: 172m²
2nd Floor: 119m²
Total: 292m²



Villa American European Style 11



1st Floor : 175m²
2nd Floor: 120m²
Total: 295m²



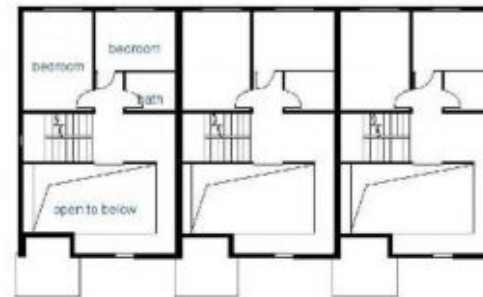
Villa American European Style 12



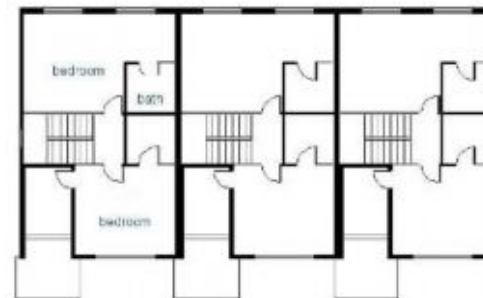
1st Floor: 98m²
2nd Floor: 70m²
3rd Floor: 88m²
Total: 256m²



F1



F2



F3