



Worker camp sample

Geiger International is capable to provide worker camps for all costumers desires.

In this presentation Geiger International shows two kinds of building structures, for **200 worker** .

Our team provide the structure plans and the bellowing offer matching to the climate needs of the country and the government rules.

Geiger-International

www.geiger-international.com

Mail: info@geiger-international.com



Geiger Sample Offer for Worker Camp

Option 1:

Design No.	Layout	Building area	Qty.	Remark
001	1 Person house	42,89m ²	10	With Floor System
002	2 Person house	95,82m ²	10	With Floor System
003	3 Dining room	309,50m ²	1	Without Floor System
Above Houses total need 12 * 40'40HQ Container				

Option 2:

Design No.	Layout	Building area	Qty.	Remark
004	Container house 1	42,89m ²	10	
005	Container house 2	95,82m ²	10	
003	3 Dining room	309,50m ²	1	Without Floor System
Above Houses total need 21 * 40'40HQ Container				



One person house-42.89m²:

With floor system

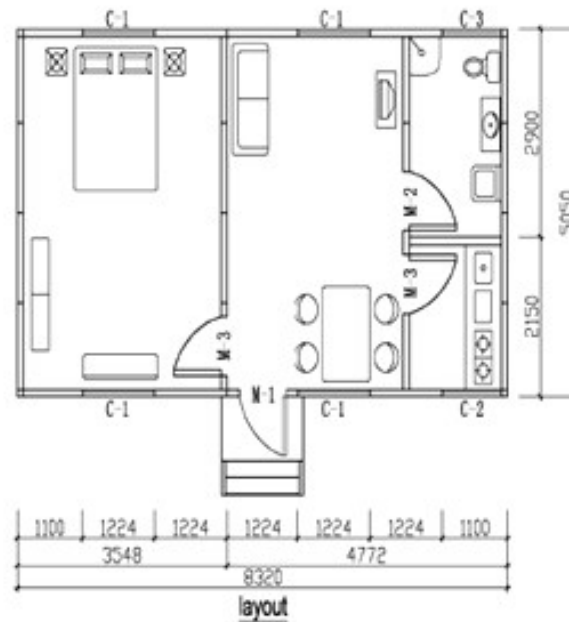
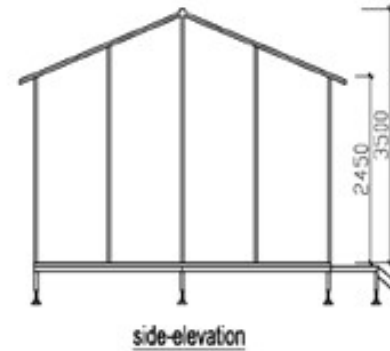
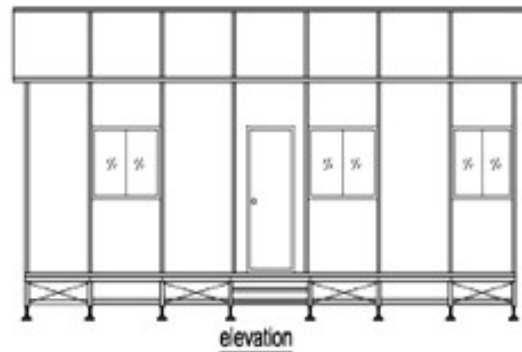
House parts	42.02m ²
House building area	42,02m ²
	50mm wall panel, 60mm roof
Ceiling	42,02 mineral wool acoustic panel
Door	SIP door
Color steel sliding window	C1:1200mm*1000mm
Color steel sliding window	C2:1000mm*1000mm
Color steel sliding window	C3:1000mm*500mm
Flooring System	Elevated flooring system 42,89
PVC Vinyl sheet	1,5mm thickness 42,89
Wiring system	including fluorescence lighting, switch off, socket, D/B box, wiring, exhaust fan etc.)
Shower Accessories	Shower curtain size: 1.6m *1.8m, Shower Rail, Shower Tray size: 0.9m*0.9m*0.15m, Soap Shelf Stainless Steel Mirror, Size: 0.4m*0.6m, Toilet Roll Holder Stainless Steel 1, Double Bar Towel Rack 1
Furniture (bedroom, living room, kitchen)	bedroom(double bed , bed table, garderope, table), living room (sofa, TV table, Banqueting chair and table), Kitchen (Built-in kitchen)



One Person house 42,89m². With floor system

Marks	Description	Sqm	Qty/Set	Remark
House Parts	Prefabricated house			
	House parts	42,02		
	House building area	42,02		50mm wall panel, 60mm roof
	Ceiling	42,02		SIP door
	Door	4,00		C1:1200mm*1000mm
	Color steel sliding window	1,00		C2:1000mm*1000mm
	Color steel sliding window	1,00		C3:1000mm*500mm
	Elevated flooring system	12,89	1	
Flooring system	PVC Vinyl Sheet 1.5mm thickness	42,02	1	
Wiring	Wiring System (including fluorescence lighting, switch off, socket, DVB Box, wiring exhaust fan etc.	42,02	1	
Plumbing system and sanitary equipment	Waterproof material with the tools	9,08	1	
	Bathroom (including the toilet, wash basin, shower head and all the feed-water/draining system pipes and connection parts)		1	
	Shower Curtain size: 1,6m*1,8m Shower Rail, Shower Tray size 0,9m*0,9m*0,15m, Soap Shelf Stainless Steel, Mirror Size 0,4m*0,6m, Toilet Roll Holder Stainless Steel			
	Double Bar Towel Rack		1	
Furniture	Bedroom (double bed, bed table, garderobe table), Living room (sofa, TV table, Banqueting chair and table), Kitchen (Built-in Kitchen)			

One Person Type 42,89 Sqm



50mm thickness EPS wall panel and 60mm thickness EPS roof panel
 The house can be assemble and dissemble
 M-1: right exterior opening SIP door with the size of 800mm* 2000mm
 M-2 :right interior opening SIP door with the size of 750mm* 2000mm
 M-3: left interior opening SIP door with the size of 750mm* 2000mm
 C-1: color steel sliding window with the size of 1200mm* 1000mm, from the ground to the bottom of the window is 1000mm
 C-2: color steel sliding window with the size of 1000mm* 1000mm
 From the ground to the bottom of the window is 1000mm
 C-3: color steel sliding window with the size of 1000mm* 500mm, from the ground to the bottom of the window is 1600mm
 House building area: 42.02sqm
 Steel step area: 0.87sqm
 The total building area is 42.89sqm



Two Person House 95,82m²

Marks	Description	Sqm	Qty/Set	Remark
House Parts	Prefabricated house			
	House parts	91,47		
	House building area	91,47		50mm wall panel, 60mm roof
	Ceiling	91,47		Mineral wool acoustic panel
	Door	10,00		SIP door
	Color steel sliding window	5,00		
	Color steel sliding window	5,00		Color steel window
Louring system	Elevated flooring system	95,82	1	
	PVC Vinyl Sheet 1.5mm thickness	91,47	1	
Wiring	Wiring System (including fluorescence lighting, switch off, socket, DVB Box, wiring exhaust fan etc.	91,47	1	
Plumbing system and sanitary equipment	Waterproof material with the tools	5,02	5	
	Bathroom (including the toilet, wash basin, shower head and all the feed-water/draining system pipes and connection parts)		5	
	Shower Curtain size: 1,6m*1,8m Shower Rail, Shower Tray size 0,9m*0,9m*0,15m, Soap Shelf Stainless Steel, Mirror Size 0,4m*0,6m Toilet Roll Holder Stainless Steel		5	
	Double Bar Towel Rack		5	
Furniture	Two Bunk bed, one cabinet (4 units)		1	



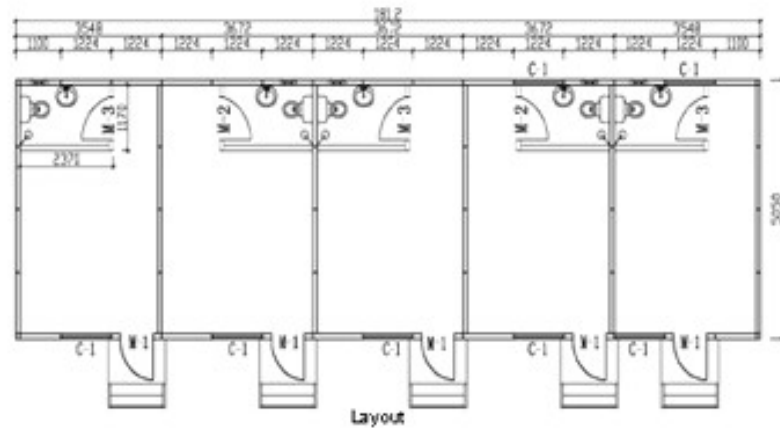
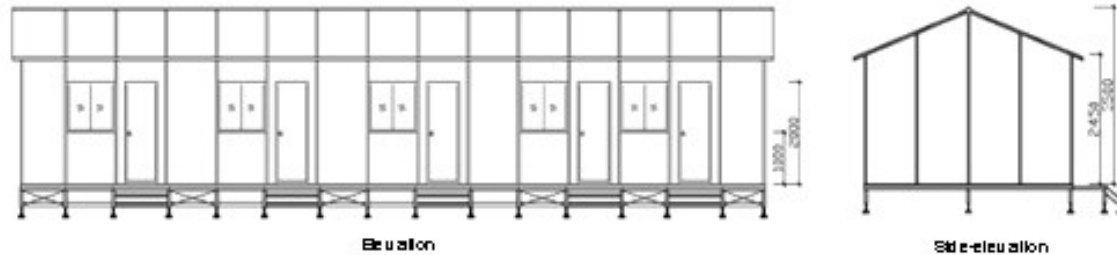
Two person house-95.82m2:

With floor system

House building area: 91,47 50mm wall panel, 60mm roof	
60mm roof ceiling, 91,47 mineral wool acoustic panel door	
SIP door	color steel sliding window color steel sliding window, color steel window
flooring system	System elevated flooring system, 1 PVC Vinyl Sheet, 1.5mm thickness
Wiring system	Including fluorescence lighting, switch off, socket, D/B box, wiring, exhaust fan etc.
plumbing system and sanitary equipment	waterproof material with the tools, 5 Bathroom (including the Toilet, wash basin, shower head and all the feed-water/draining system pipes and connection parts)
Shower Accessories	Shower Curtain size: 1.6m *1.8m - Shower Rail, Shower Tray size: 0.9m*0.9m*0.15m, Soap Shelf Stainless Steel, - Mirror, Size: 0.4m*0.6m, Toilet Roll Holder Stainless Steel, Double Bar Towel Rack
Furniture	Two Bunk bed, one cabinet (4 units)



2 Person House Type 95,82Sqm



50mm thickness EPS wall Panel and 60mm thickness EPS roof panel
 The house can be assemble and disassemble
 M-1: Right exterior opening SIP door with the size of 800mm* 2000mm
 M-2: Right interior opening SIP door with the size of 750mm*
 M-3: Left interior opening SIP door with the size of 750mm* 2000mm
 C-1: color steel sliding window with the size of 1200mm* 1000mm from the
 ground to the bottom of the window is 1000mm
 The house building area: 91.47sqm
 The steel step area: 4.35sqm
 The total building area is 95.82sqm



Unit size 5950*2310*2740mm

The insulated material of the house is EPS

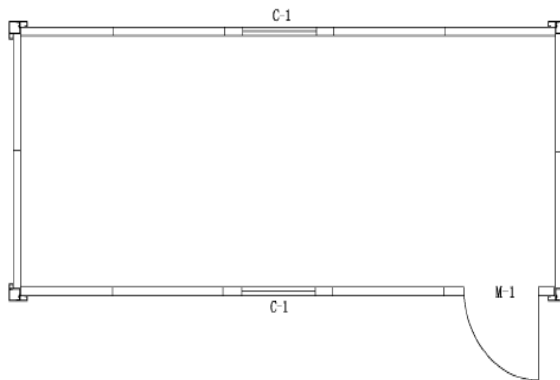
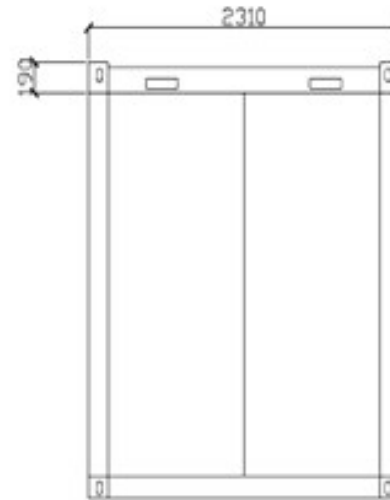
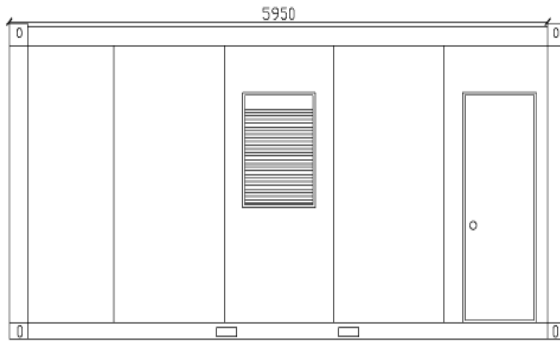
Marks	Description	Unit	Qty
	Prefabricated houses		
House part	Per standard house body (13.74m ²)	Set	1

Unit size: 5950*2310*2740mm

The insulated material of the house is EPS

Marks	Description of goods	Unit	Qty.	
House part	Per standard House Body (13.74m ²) Partition wall	Set/pcs.	1	75mmEPS panel
	SIP door	Pcs	1	Sandwich panel door with the knob lock, the size 800*2000mm
Accessory				
No.	Item	Unit	Qty.	
	Wash basin	Pcs	1	
1	Toilet	Pcs.	1	

Container House-1



Remark:

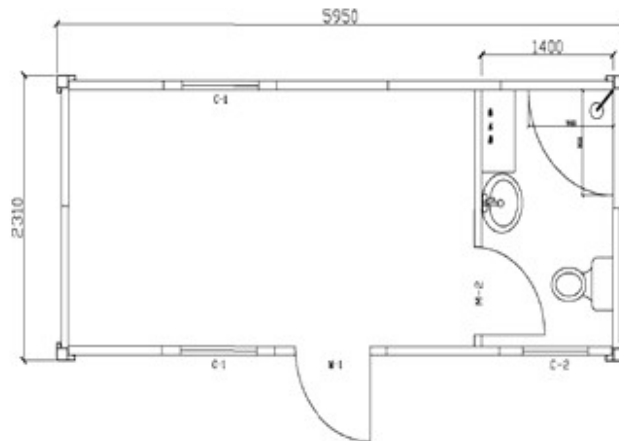
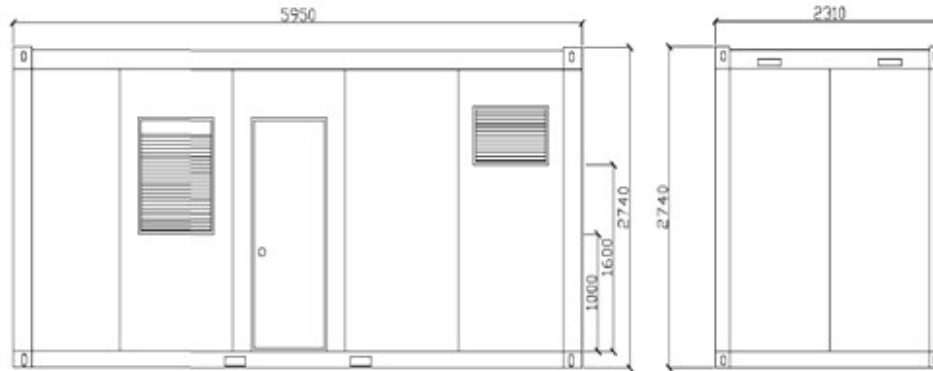
1. Wallboard thickness 75mm, exterior surface: color –steel sheer, interior surface : high molecular synthetic material, the insulation material: polystyrene foam.
2. Window.

C-1, size: 700mm* 1000mm PVC European type window with hollow glass, from the foundation to the bottom of window 1000mm

Door :

M-1, size: 800mm* 2000mm, SP door.

Container House-2



Remark:

1. Wallboard thickness 75mm, exterior surface: color –steel sheer, interior surface : high molecular synthetic material, the insulation material: polystyrene foam.

2. Window.

C-1, size: 700mm* 1000mm PVC European type window with hollow glass, from the foundation to the bottom of window 1000mm

Door :

M-1, size: 800mm* 2000mm, SP door.

M-2, 750mm* 2000mm, SIP door.



Canteen for 200 Workers and a VIP lounge:

Dining Hall					
Specification length *width*height(mm)			Rixin single storey house	Size	34.94m*11.05*3.84m
Series	Name prefab unit	Unit	Quantity	Remark (price/m ²)	
1	Prefab unit	Group	19	50mm wall, 75mm roof	
2	Fronton	Group	2		
3	Dividing wall	m ²	180,05		
4	Ceiling	m ²	389,58	Mineral wool acoustic panel for the dining hall and VIP rooms, the other part is aluminum board as ceiling	
5	Simple lighting	m ²	389,58	(Including fluorescence lighting switch of socket D/B box wiring, exhaust fan etc.)	
Kitchen mm	3IP door	Pcs	5	Size: 800*2000mmm, M-2, M-3	
	Kitchen Pipes (water supply/ draining system pipes and connects		12		
	Stainless sink with faucet		2		
	Cooker and Hood Set		2		
5	Kitchen Cabinet	m ²	7		



**GEIGER
INTERNATIONAL**

Information for Designer

Our Interest is to offer you the best solution for your project, in order to provide you with our best offer we ask you to fill this questionnaire below.

Project Owner: _____
Address: _____
Telephone number: _____
E-Mail: _____

1. Info for Architecture

a. Main Gate Facing:

East ___ South ___ West ___ North ___ Others _____

2. Info for Structure

a. Natural Condition:

Wind Load _____ KN/___ Snow Load _____ KN/___

Seism _____ Richter Scale _____

Location: Seaside ___ Urban ___ Rural ___ Others _____

b. Soil Report: Provided ___ N/A ___

c. Loading Info:

Floor Load _____ KN/___ Roof Load _____ KN/___

Live Load for Toilet _____ KN/___

Live Load for Balcony _____ KN/___

Live Load for Terrace _____ KN/___

Others _____ KN/___

d. Other Info:

Rainfall:

Average Annual Rainfall _____ mm

Maximum Annual Rainfall _____ mm

Geiger International
Head- Office
Egelsestrasse 52b
Feldkirch 6800, Austria
Phone: 0043 5522/32201
Fax: 0043 5522/32201-28

Geiger International
Shanghai Office
Room 1604, 1388 Shan Xi North Road
Shanghai 200060, China
Phone: 0086 261498309

Web: <http://www.geiger-international.com>
eMail: info@geiger-international.com



**GEIGER
INTERNATIONAL**

Minimum Annual Rainfall _____ mm

Temperature: Average Annual _____

Maximum Annual _____

Minimum Annual _____

Freezing Level Standard Freezing Depth _____ m

Level Difference between External and Internal Floor Levels: _____m

3. Info for Plumbing and Sanitary

A) Water Pipe Connection from:

East ___ South ___ West ___ North ___ Others _____

B) Heating Method ___ Gas ___ Electric ___ Others _____

c) Hot water comes from _____

4. Info for Plumbing and Sanitary

a. Cable Connected From:

East ___ South ___ West ___ North ___ Others _____

Geiger International
Head- Office
Egelseestrasse 52b
Feldkirch 6800, Austria
Phone: 0043 5522/32201
Fax: 0043 5522/32201-28

Geiger International
Shanghai Office
Room 1604, 1388 Shan Xi North Road
Shanghai 200060, China
Phone: 0086 261498309

Web: <http://www.geiger-international.com>
eMail: info@geiger-international.com



**GEIGER
INTERNATIONAL**

Information for Designer

Our Interest is to offer you the best solution for your project, in order to provide you with our best offer we ask you to fill this questionnaire below.

Project Owner: _____
Address: _____
Telephone number: _____
E-Mail: _____

1. Info for Architecture

a. Main Gate Facing:

East ___ South ___ West ___ North ___ Others _____

2. Info for Structure

a. Natural Condition:

Wind Load _____ KN/___ Snow Load _____ KN/___

Seism _____ Richter Scale _____

Location: Seaside ___ Urban ___ Rural ___ Others _____

b. Soil Report: Provided ___ N/A ___

c. Loading Info:

Floor Load _____ KN/___ Roof Load _____ KN/___

Live Load for Toilet _____ KN/___

Live Load for Balcony _____ KN/___

Live Load for Terrace _____ KN/___

Others _____ KN/___

d. Other Info:

Rainfall:

Average Annual Rainfall _____ mm

Maximum Annual Rainfall _____ mm

Geiger International
Head- Office
Egelseestrasse 52b
Feldkirch 6800, Austria
Phone: 0043 5522/32201
Fax: 0043 5522/32201-28

Geiger International
Shanghai Office
Room 1604, 1388 Shan Xi North Road
Shanghai 200060, China
Phone: 0086 261498309

Web: <http://www.geiger-international.com>
eMail: info@geiger-international.com



**GEIGER
INTERNATIONAL**

Minimum Annual Rainfall _____ mm

Temperature: Average Annual _____

Maximum Annual _____

Minimum Annual _____

Freezing Level Standard Freezing Depth _____ m

Level Difference between External and Internal Floor Levels: _____m

3. Info for Plumbing and Sanitary

A) Water Pipe Connection from:

East ___ South ___ West ___ North ___ Others _____

B) Heating Method ___ Gas ___ Electric ___ Others _____

c) Hot water comes from _____

4. Info for Plumbing and Sanitary

a. Cable Connected From:

East ___ South ___ West ___ North ___ Others _____

Geiger International
Head- Office
Egelseestrasse 52b
Feldkirch 6800, Austria
Phone: 0043 5522/32201
Fax: 0043 5522/32201-28

Geiger International
Shanghai Office
Room 1604, 1388 Shan Xi North Road
Shanghai 200060, China
Phone: 0086 261498309

Web: <http://www.geiger-international.com>
eMail: info@geiger-international.com